

Preserving Our Past



Growing Our Faith



Building Our Future



Saint Rita's Catholic Church  
**Information Statement**



Inspired by St. Rita of Cascia, we believe, *"With God All ☐ings Are Possible"*

# A MESSAGE FROM Our Bishop



**DIOCESE OF FRESNO**  
**PASTORAL CENTER**  
1550 NORTH FRESNO STREET  
FRESNO, CALIFORNIA 93703-3788  
TELEPHONE (559) 488-7400



September 13, 2021

Dear Fr. Ivan and Saint Rita's Parishioners and Friends,

Peace be with you! I extend my warm greetings and Congratulate you on the progress and ongoing commitment on the building of your new church.

I pray for a special outpouring of the Holy Spirit as you take the next step in fulfilling your vision to build a new church. You have raised \$7.3 million dollars of the estimated \$8.2 million dollars necessary for the completion of the site work and construction of the new church structure. I am ecstatic to know that all of the initial site work has been completed and that the construction of the new church has started.

As you continue to expand the "site master plan," the need for your ongoing prayers, sacrifice, and support of every member of the parish community is now more important than ever indispensable. Together as a parish community, I know you will fulfill your vision and make this dream a reality.

It is with a humble and grateful heart that I encourage every member of your parish community to join and participate by faithfully continuing your pledging, supporting your fundraising events, and sharing your time and talents. Furthermore, I invite all parish members and friends to continue to participate in the extension of the Parish Campaign. Please know that as you respond with open hearts and generosity you are witnesses of your Christian life for future generations.

I pray that the Holy Spirit will shower His immeasurable gifts on you as you continue to support the **"Preserving our Past ... Growing Our Faith ... Building Our Future"** Campaign and will bring our vision of the new church to completion.

In Christ,

Most Reverend Joseph V. Brennan, D.D.  
Bishop, Diocese of Fresno



# A MESSAGE FROM **Our Bishop**



**DIOCESE OF FRESNO**  
**PASTORAL CENTER**  
1550 NORTH FRESNO STREET  
FRESNO, CALIFORNIA 93703-3788  
TELEPHONE (559) 488-7400



September 13, 2021

Dear Fr. Ivan and St. Rita's Parishioners,

It is with great joy and hope that I greet you and congratulate you on your commitment to St. Rita's new Church and parish facilities building plan. I am joyful to know that you have raised \$6.4 million dollars of the \$8.2 million dollars necessary for the initial site work and construction of the new Church.

You are commended as you continue to grow as a community of faith in Tulare, working enthusiastically to build a new and larger Church. These plans which include for educational children's facilities, adults on their journey of faith, expansion of your mission, ministries, programs, and services. With so many people dedicating their time, talent, and treasure to support your parish community, you are becoming a more vital, diverse, and growing parish within our diocese.

The time has come to take another step forward to fulfill your vision. The parish plan for a beautiful new Church and future classrooms, meeting rooms, parish offices, church hall and rectory, will only be realized with the active participation of every parishioner who calls St. Rita's their home. It is with a humble and grateful heart that I invite every member of your parish community to join and participate by faithfully continuing your pledging, supporting your fundraising events, and sharing your time and talents. I also, invite all parish members and friends to continue to participate in the extension of the Parish Campaign. Know that as you respond with open hearts and generosity, God will multiply His blessings upon you, your family, and community.

Once again, I commend you on what you have already done under the leadership of Fr. Ivan. I encourage your continued support of one another and join you in prayer as you develop St. Rita's Parish for the future. Asking God's blessing upon each of you, and I know that **"Preserving Our Past ...Growing Our Faith ...Building Our Future"** campaign will be a success.

Sincerely in Christ,

Most Reverend Armando X. Ochoa, D.D.  
Bishop Emeritus, Diocese of Fresno



# A MESSAGE FROM Our Pastor



**Saint Rita's Catholic Church**  
954 S. O Street, Tulare, CA 93274  
Phone 559 686-3847 Fax 559 686-9672  
[www.stritacatholicchurch.com](http://www.stritacatholicchurch.com)



Dear Parishioners,

Thank you for your prayers, participation, and support in building our new church. I believe the most important part of the Parish is the people. We are the people, and we are the church. Faith filled people need a place to grow and spread the mission of Christ.

As construction of our new church begins, we will be able to see with our own eyes and measure the daily progress. We will see the laying of the foundation, walls will spring up, the roof, windows, and entrance to our church will appear along with many other amenities. It is like a puzzle as it comes together piece by piece revealing a beautiful church. What a joy we will feel knowing that our hard work and sacrifice was worth it.

This beautiful new church is where we will pray for our needs and those of others, give thanks for the many blessings we have received, and a legacy for years to come.

As your Parish Priest I would like to thank all the parishioners that have fulfilled their pledge and continue to contribute, for those committed to their present pledge, and for those who have not had the opportunity to pledge. I invite and encourage you to join us and become a partner in the construction of the new church. We need the help of the entire St. Rita's community now more than ever to accomplish our goal. We have raised \$7.3 million of the estimated \$8.4 million needed. Look how far we have come, with God's help.

It is an honor and privilege to serve as your pastor. I am confident you will respond with a generous heart as we build God's church. Again, I thank you for praying and supporting the parish Campaign.

Please Pray, Participate and Pledge. May God bless you and reward your generosity.

In Christ's Love,

Fr. Iván Hernández Melchor  
Pastor

*"With God's Will Everything is Possible"*

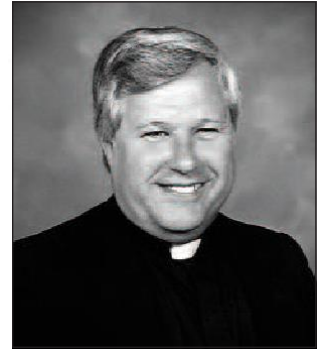
[www.stritacatholicchurch.com](http://www.stritacatholicchurch.com)



# A MESSAGE FROM St. Aloysius Pastor



*St. Aloysius Church*



Dear Father Iván and Parishioners of Saint Rita's,

Building a new church from the ground up is an awesome undertaking. It demands the vision of a pastor who has a vision to see the church in his mind and soul. The pastor must have the ability to communicate his vision, the dedication and persistence to continue to keep this vision before his people as they support him with the necessary fund-raising activities. The pastor must also know how to encourage his people in the times when attaining the vision seems to falter. The parishioners share the pastor's zeal for the new church. They follow his lead. They also offer their input and collaborate with him because it is their church. Together, pastor and parishioners, the Body of Christ, make a formidable team and good things happen.

When I attended the groundbreaking ceremony for your new church on April 27, 2021, I saw all these elements in action. The pastor's leadership and dedication were obvious in his manner of communicating and reaching out to all that were present. But the dream of a new church cannot come to fulfillment without the people and on April 27, I saw the dedication and the drive of the people of Saint Rita's to build their new church. Your campaign slogan. ***"Preserving Our Past.... Growing Our Faith.... Building Our Future"*** was not merely well-chosen words. It has become a reality in the pastor and people of Saint Rita's.

As you move forward into your future, I will continue to pray for you. May God continue to bless your efforts.

Sincerely yours in Christ,

*Msgr. Richard Urizalqui, V.F.*

Reverend Msgr. Richard Urizalqui  
Pastor of St. Aloysius Church

---

125 East Pleasant Avenue



Tulare, California 93274



(559) 688-1796



***"Preserving Our Past... Growing Our Faith... Building Our Future"***

# Frequently Asked Questions

## 1. Why do we need a new church?

St. Rita's is a growing and diverse parish community. We must build a new church and parish facilities to accommodate the increasing number of parishioners, ministry groups and youth attending religious classes. We have outgrown our 1993-98 expansion and our current parish facilities. A larger church will accommodate additional people comfortably and safely for many years and it would reduce the number masses celebrated every weekend.

## 2. How will building a new church and parish facilities benefit our parish, families, and ministries?

Having these new facilities will:

- Increase our church seating capacity and parking spaces.
- Increase the size of our classrooms, meeting rooms and parish facilities.
- Allow for additional resources, support and growth of our parish and ministries.
- Accommodate the growing number of parishioners for many years to come.

## 3. What will happen to our current church, property, and facilities once we move?

Once we have reached our goal to build a new church, parish leaders will decide what to do with our current church and facilities.

## 4. Will we incorporate items from our current church and facilities to our new property?

Yes, items important to preservation of St. Rita's heritage such as sacred items, stained glass windows, religious artwork and statues will be incorporated at the new church.

## 5. What is the estimated time frame for building the new church?

We anticipate beginning construction of the new church in August 2021. The expected completion time is 11 to 12 months from start to finish.

*The next steps:*

- Extend the Campaign for our new church and parish facilities (2021 to 25)
- Continue to develop our new church and parish facilities master plan.

## 6. How will St. Rita's inform parishioners, so these changes are apparent and clear to everyone?

St. Rita's priests, finance council, staff, and campaign and building committee's focused on clearly communicating campaign and building plans through:

- Pulpit announcements, bulletin inserts, newsletters, personal letters
- orientation meetings, receptions, social gatherings
- Personal and telephone contacts
- Marketing materials and campaign displays

## 7. Will we be given an opportunity to comment and participate in the design of the new church and parish facilities?

Throughout the entire planning and design process the Building Committee has welcomed parishioners' input and suggestions, regarding the design of the new church. Gratitude is extended to those parishioners who provided comments and suggestions, and participated in our meetings (May 2014 through February 2015). All future comments can be directed to the Building Committee co-chairs.



# Frequently Asked Questions

## 8. How much will the new church and parish facilities cost?

The building department of the Fresno Catholic Diocese estimated a cost of 8 +/- million dollars to complete the necessary site work and build our new church.

## 9. How much money do we have in the Building Fund towards this project?

The Building Fund started out with \$400,000, when the planning and design phase began in May 2014. Thanks to the generosity and support of parishioners and friends as of August 2021 this fund has increased to over \$6.3 million.

## 10. How long will it take to raise the remaining money?

It was originally estimated that the funds for the new church and onsite facilities would be raised during the next 5 to 7 years. We are in the 5<sup>th</sup> year of a five year pledge and need to extend the pledge timeline to reach our campaign goal.

## 11. Will this campaign raise enough money to build our new church and parish facilities?

Building the new church and parish facilities is a multi-year project. What will be accomplished will be determined by the amount of money we raise. At this time the site development work has been completed and we hope to begin constructing the church structure. Ongoing fundraising needs to continue to complete the church and parish facilities.

## 12. What is the difference between contributing to the monthly Building Fund and making a pledge?

Faithful contributions to the current Building Fund are used strictly for the new church project expenses, such as our campaign advisor, our architect who is developing our master plan, administration expenses and the campaign printing expenses.

Once our Building Fund has the amount of cash, we need to start the actual building phase, additional expenses will be incurred for the contractors and permits and will come directly out of the Building Fund. Our pledges and gifts go directly into our Building Fund Account and will be used only for building our new church and establishing the new parish facilities on our new property.

## 13. How can I help with the Campaign?

- a) **Praying** for the success of the campaign. It's important for everyone to share their enthusiasm for the benefits of our new church and parish facilities project.
- b) **Participating** as a volunteer with hospitality, publicity, make phone calls, assist with campaign mailings or distributing materials before and after Mass. All volunteers will receive training and instructions.
- c) **Pledging** a financial commitment to the campaign.

## 14. Why are pledges important?

Pledges are vital to the success of building our new church and parish facilities project. All individual pledges and any outside contributions will make it possible for our parish to achieve its campaign goal.



# Frequently Asked Questions

## 15. How much money should I pledge?

Each family will be asked to make a personal commitment to pledge the highest possible pledge over a 60-month period. The amount is an individual consideration based on the principle of *"Equal Sacrifice not Equal Gifts"* and based on the blessing that you and your family have received from God.

## 16. Is my pledge to St. Rita's parish legally binding?

While the pledge is not a legal document, it is an act of faith to carry on our Catholic heritage and legacy for many generations to come. It is a spiritual commitment.

## 17. Is my donation to St. Rita's Catholic Church tax deductible?

Yes, all gifts are tax deductible based on the method of giving. We would suggest you contact your tax advisor as to how your giving benefits you.

## 18. Will there be a plan to recognize donors who contribute to this campaign?

Yes, there will be appropriate recognition for donors. A series of specific memorial gifts or naming opportunities for loved ones, living, and deceased or special intentions have been identified.

## 19. Is it fair to ask younger families and retired people to participate, especially if they have limited discretionary income?

All St. Rita's parishioners and families are being asked to support the present and future mission of our parish. Everyone's participation should be at the highest level possible by contributing and participating to support the church, your family, and this community.

## 20. How do I determine my pledge to St. Rita's "Preserving Our Past...Growing Our Faith... Building Our Future," Campaign?

Every household will receive an information packet with a pledge card and return envelope. After reviewing the information packet, it is highly recommended that you pray and then decide on the level of commitment you can support.

## 21. When do I start giving my pledge contribution? Many of you have been faithful pledging, for several years.

You can continue to submit your contribution along with your completed pledge card in a return envelope that will be provided. If this is your first time to pledge, the Campaign office will be mailing special pledge envelopes to all campaign donors who have pledged. These envelopes will be sent to your current mailing address. Please submit your pledge payment(s) in these envelopes and return them to St. Rita's based upon the method of payment you selected.

## 22. What are the methods of payments for the "Preserving Our Past... Growing Our Faith... Building Our Future," campaign?

A reminder statement and a return envelope will be sent to all contributing individuals. You may indicate on your pledge card the method of payment you prefer (Monthly, Quarterly, Annually, etc.). You also have the option to set up direct payments from your checking or savings accounts. Other options include stocks, property, life insurance and deferred gifts.





# Frequently Asked Questions

## **23. Suppose I cannot keep up with my pledge to the campaign?**

Pledges are not legally binding. Pledge payments can be deferred until your situation improves. Please contact the parish office with any changes you must make.

## **24. Will a pledge to this campaign affect my weekly contribution?**

Pledges to the campaign are separate from your regular weekly offering to the parish. Offertory contributions are needed to support the on-going and recurring operational expenses of the parish, rather than the building of a church and facilities. Please consider a pledge without reducing your regular offertory contribution.

## **25. Over the years, we could conceivably do more campaigns. Will these other campaigns blend aesthetically?**

Yes, there could be additional campaigns. The need for an aesthetic, yet effective design of space and cost of materials are being considered by the building committee.

## **26. Does the Diocese of Fresno receive a portion of the “Preserving Our Past... Growing Our Faith... Building Our Future” Campaign?**

No. These gifts and pledges will be deposited in St. Rita's Building Fund Account and will be kept separate from the "normal parish operating funds."

## **27. How does our new church and parish facilities campaign affect the Bishop's Annual appeal?**

The Bishop's Annual appeal is a Diocesan wide program that provides funding for ministries and services for parishes in need. It is independent of St. Rita's new church and parish facilities campaign. The Bishops program will continue as an annual appeal.

## **28. How did St. Rita's determine the design of the new church?**

The design of the new church was determined by parishioners who responded to surveys conducted by St. Rita's building committee during July 2014.

## **29. What were the original results of the building committee survey?**

The survey indicated St. Rita's parishioners would like a new church with a:

- a) TRADITIONAL building exterior
- b) In a CRUCIFORM (Crucifix-like) design

## **30. What will be the size of the new church?**

The estimated size of the new church is 24,944 sq. ft. and will have a seating capacity of approximately 1,600.



# Future Location

The new church will be located 2 miles east from current St. Rita's at the corner of E. Bardsley Ave. and Morrison St. (See the orange 7.99-acre site below.)



# Master Site Plan



## LEGEND:

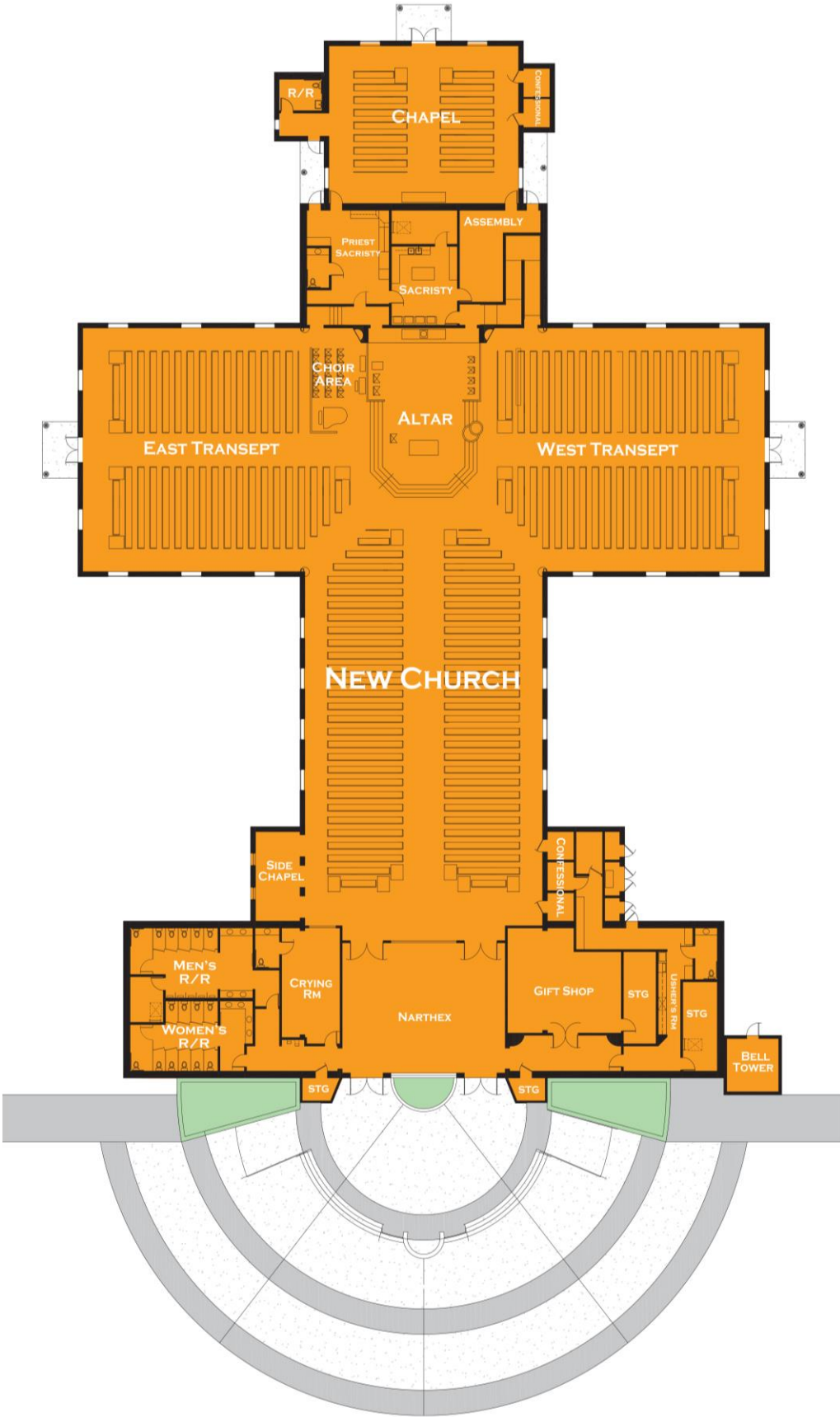
- |                        |                             |
|------------------------|-----------------------------|
| A SHUTTLE AREA         | H TRASH ENCLOSURE           |
| B CARPORT SOLAR SYSTEM | I LANDSCAPE AREA            |
| C PRAYER GARDEN        | J TREE OF LIFE (OLIVE TREE) |
| D REMOVABLE BOLLARDS   | K MONUMENT SIGN             |
| E WATER FOUNTAIN       | L DRIVE APPROACH            |
| F ACCESSIBLE PATH      | M ACCESSIBLE PARKING        |
| G PARKING              |                             |

## PROJECTED DATA:

CHURCH CAPACITY: 1,456  
 DAY CHAPEL CAPACITY: 140  
 SITE AREA: 8 ACRES  
 CHURCH TOTAL SQ FT: 22,962  
 DAY CHAPEL SQ FT: 2,180  
 PARISH HALL SQ FT: 4,500

CLASSROOMS SQ FT: 9,780  
 OFFICE SQ FT: 960  
 RECTORY SQ FT: 1,200  
 PARKING:  
 425 PARKING SPACES  
 21 ACCESSIBLE PARKING SPACES

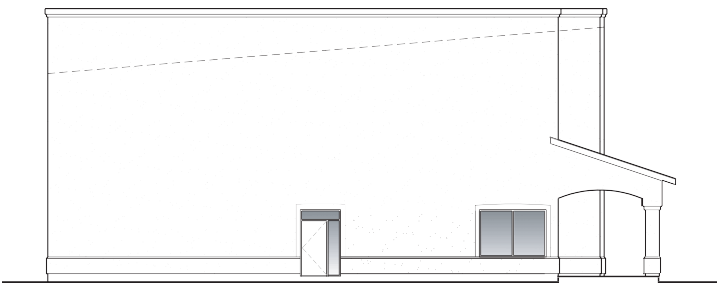
# Church Floor Plan



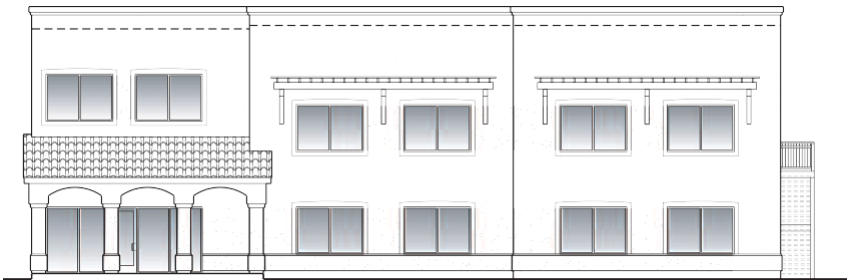
"Preserving Our Past... Growing Our Faith... Building Our Future"



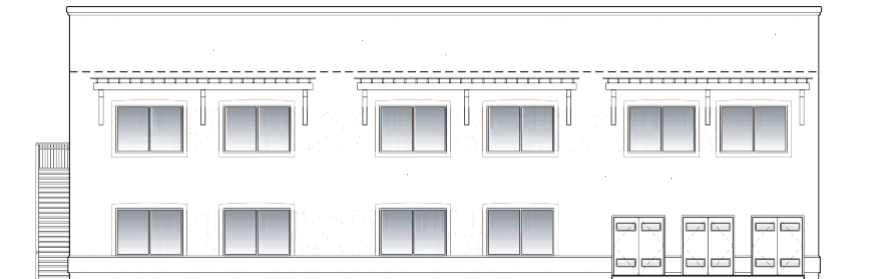
# Preliminary Classrooms Elevations



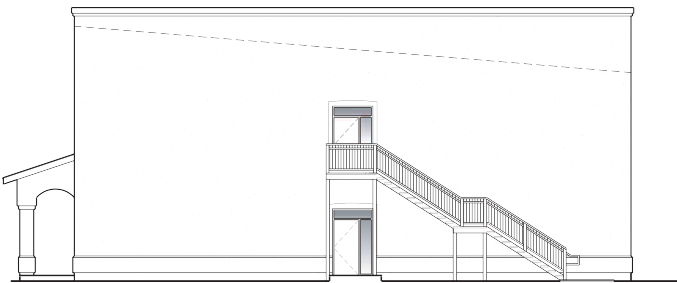
**SOUTH ELEVATION**



**EAST ELEVATION**

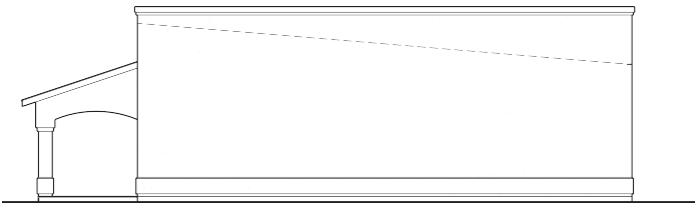


**WEST ELEVATION**

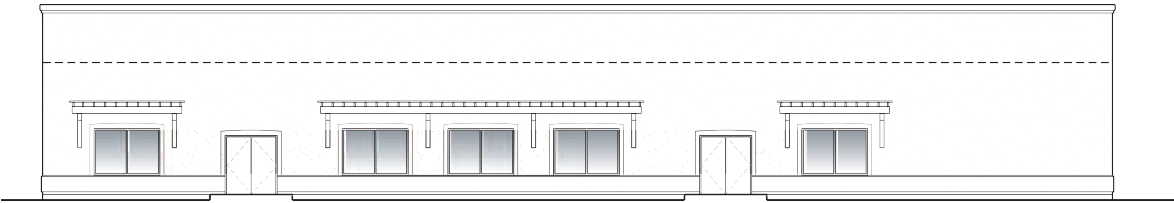


**NORTH ELEVATION**

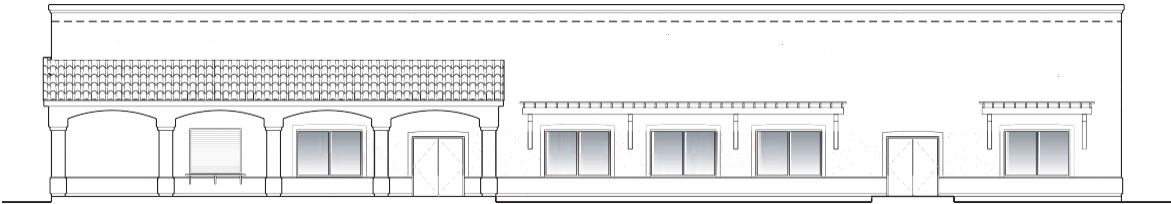
# Preliminary Youth Center and Parish Hall Elevations



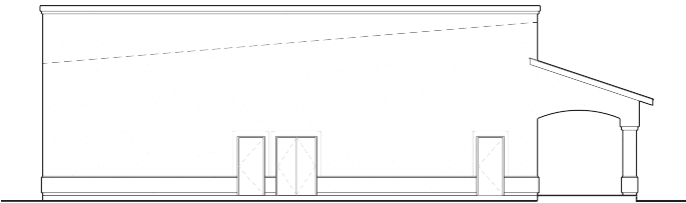
**SOUTH ELEVATION**



**EAST ELEVATION**

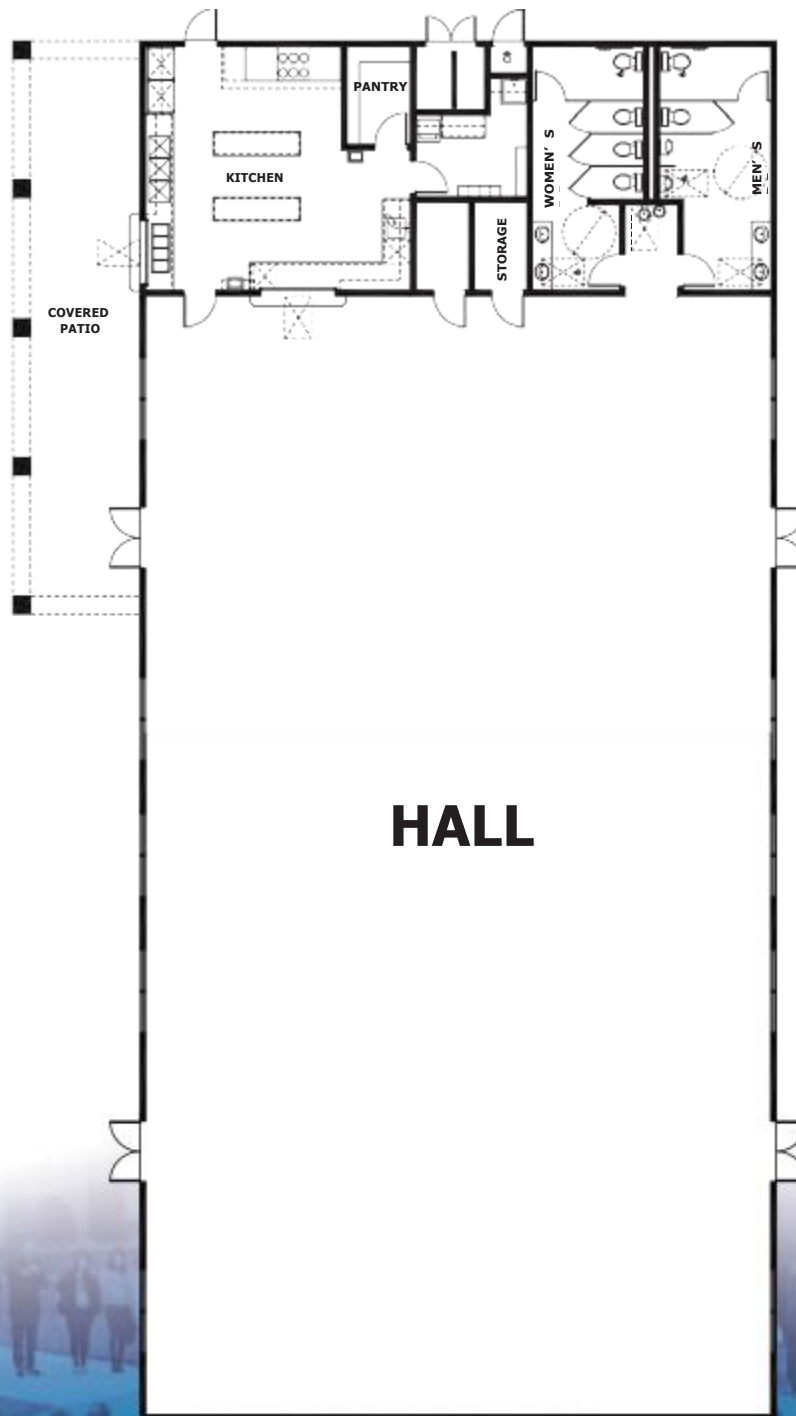


**WEST ELEVATION**



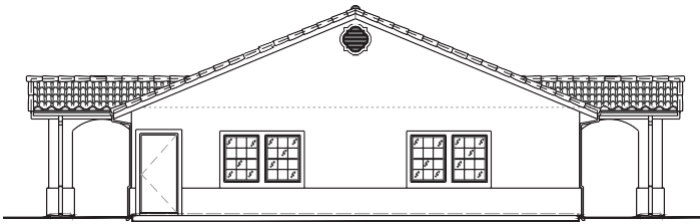
**NORTH ELEVATION**

# Preliminary Youth Center and Parish Hall Floor Plan

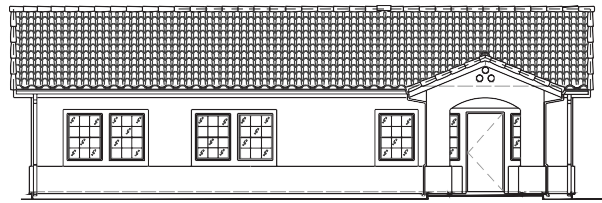




# Office Floor Elevations



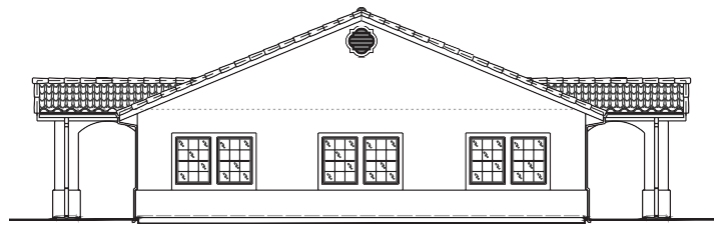
**SOUTH**



**EAST**

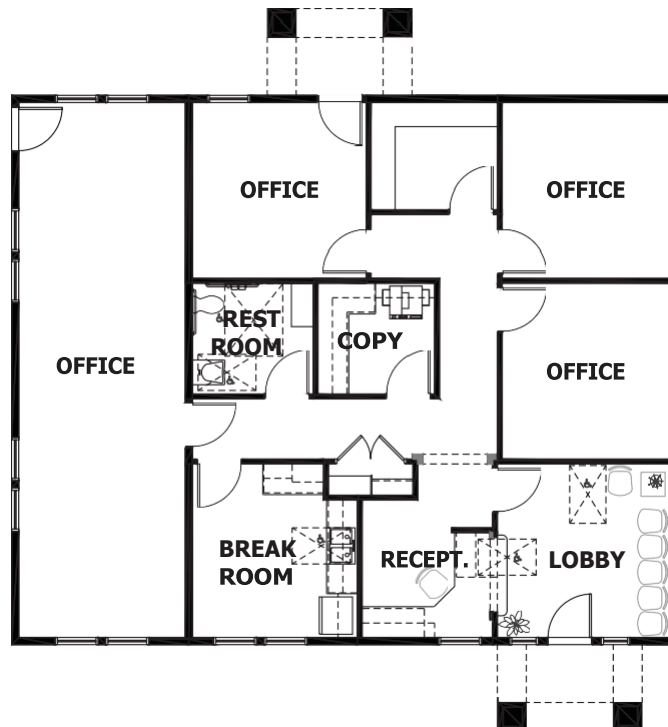


**WEST**



**NORTH**

# Office Floor Plan



# Opportunities For Giving

## Methods of Giving

Donors may make commitments to the “*Preserving Our Past... Growing Our Faith... Building Our Future*” Campaign in the form of pledges, cash, property, securities, real estate, and planned gifts. Pledges can be fulfilled over a five-year period, in whatever increments are most appropriate to you.

## Gifts From Current Income

An individual can deduct a percentage of his/her adjusted gross income, depending upon his or her circumstances. The higher the donor's income, the greater the tax savings. gifts of current income can be spread out over a number of years to take full advantage of tax deductions.

## Gifts of Property\*

Deducting the full market value of your gift on your tax return reduces your personal tax cost. The donor also avoids payment of capital gains tax on any appreciation in the value of the property.

## Gifts in the Form of Stock, Securities or Real Estate\*

A gift of stock, securities or real estate that has increased in value can be one of the most advantageous ways of giving. gifts of this type allow the donor to make the following choices:

1. Make a significant gift without affecting his or her standard of living.
2. Avoid paying the sizable income tax on the appreciation of the stock, securities or real estate that would occur if the donor sold them.
3. Secure a Federal Income Tax deduction.

## Gifts From Bequests\*

A bequest to St. Rita's Church will result in a greater amount passing to the donor's heirs because of the tax savings now, in addition to future inheritance tax savings.

## Gifts of Life Insurance\*

A donor may make the “*Preserving Our Past...Growing Our Faith... Building Our Future*” Campaign the beneficiary of a life insurance policy. His/her premium payments then become deductible for income tax purposes. A new policy may be taken out in the name of St. Rita's Church, or an existing policy may be gifted to the Campaign.

## Corporate Matching Gifts

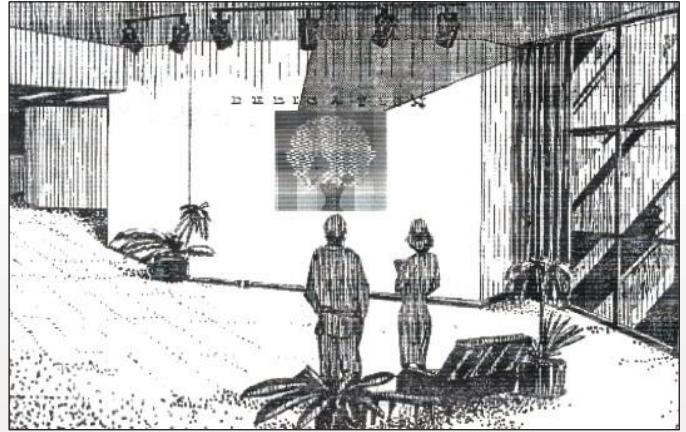
Contact your employer to see if there is a corporate matching gift program. If so, this could effectively double your own gift.

**\*Based upon current tax law in 2014. Please consult your tax advisor with regard to your specific situation.**

# Memorial Gifts Recognition Plan

*The St. Rita's Parish Recognition Plan will include an attractive display located in the new church.*

*All donors who fill out a pledge form and contribute to the campaign will be listed in a memorial book and on a prominent display. To provide permanent recognition for donors to our new church, a series of specific memorial gifts are also identified. There will be a special blessing of all memorial gift opportunities. At that time, all the "Preserving Our Past... Growing Our Faith... Building Our Future" donors will be recognized.*



## What is a Memorial Gift Opportunity?

A memorial gift opportunity is a special way of honoring people we love, whether they are living or deceased. Memorial gifts made to our new church and parish facilities are a wonderful "concrete way" of showing gratitude to God, the giver of all gifts. A Memorial item is a contribution made to the campaign **"In Memory Of"** a deceased person or **"In Honor Of"** someone or something.

## How will Memorial Gifts be recognized?

Donors to St. Rita's Church will be recognized on an attractive display located in the new church. All donors to the campaign regardless of amount will be recognized in a memorial book. *St. Rita's Parish reserves the right to manage the control of the design and to "name" the designated items in appropriate and dignified manner.*

## Do the suggested gift amounts for Memorial Gift opportunities represent their actual cost?

No, the suggested amount of a memorial opportunity is determined in consideration of the privilege of designation and to finance Phase I of our new church. each parishioner must decide if and how they will contribute to our Phase I project. Those who prefer a memorial gift will have

the opportunity to select an item(s) from our Memorial gift list on the following two pages. In selecting a memorial, you permit St. Rita's Parish to raise the funds necessary for our Phase I projects.

## How does a donor reserve a Memorial Gift?

Memorials for specific items or areas are listed on the following page. If you so desire, you can simply select a memorial item that corresponds with the pledge amount you wish to donate. Memorials are reserved on a first come, first served basis. They are designated only once in the program. once a memorial has been reserved, it is no longer available. The way to reserve a memorial is to do the following:

1. Select an item from the "Memorial gift" list.
2. **To reserve the memorial, call the Parish Office at (559) 686-3847.**
3. Fill out the pledge form and return it in the reply envelope, by mail, at the Parish office or at Mass.
4. Please print on the bottom of the pledge form:  
**"In Memory Of"** and list the deceased person(s) name(s) or,  
**"In Honor Of"** and list someone or something.



# Memorial Gift Opportunities

## SUGGESTED DONATION

### NEW CHURCH <sup>1</sup>

Front Façade .....	one Million Dollars
Bell Tower (1).....	Five Hundred Thousand Dollars
Altar (eucharistic Table).....	one Hundred and Fifty Thousand Dollars
Technology Center and equipment .....	one Hundred and Fifty Thousand Dollars
Lighting System .....	One Hundred Thousand Dollars
organ (?).....	One Hundred Thousand Dollars
Sound System (Speakers and equipment).....	One Hundred Thousand Dollars
Church Art Work .....	One Hundred Thousand Dollars
Heating Ventilation and Air Conditioning System .....	One Hundred Thousand Dollars
Baptismal Font .....	Seventy-Five Thousand Dollars
Crucifix.....	Seventy-Five Thousand Dollars
Ambo (Pulpit).....	Fifty Thousand Dollars
Blessed Mother Statue.....	Fifty Thousand Dollars
St. Joseph Statue (?) .....	Fifty Thousand Dollars
our Lady of Fatima Shrine.....	Fifty Thousand Dollars
our Lady of Guadalupe Shrine .....	Fifty Thousand Dollars
Priest Sacristy .....	Fifty Thousand Dollars
Carillon (?).....	Fifty Thousand Dollars
Narthex (Vestibule) .....	Fifty Thousand Dollars
Work Sacristy .....	Forty Thousand Dollars
Clergy Vestments .....	Thirty Thousand Dollars
Bride's Room .....	Thirty Thousand Dollars
Cornerstone Church .....	Twenty-Five Thousand Dollars
Main entry Doors (?).....	(each) Twenty-Five Thousand Dollars
Stained glass Windows (?) .....	(each) Twenty-Five Thousand Dollars
Choir Area .....	Twenty-Five Thousand Dollars
Devotional Shrines .....	Twenty-Five Thousand Dollars
Tabernacle .....	Twenty Thousand Dollars
Presider's Chair .....	Twenty Thousand Dollars
grand Piano (?).....	Twenty Thousand Dollars
Main Sanctuary Candles (4) Standing.....	(each) Twenty Thousand Dollars
glass Windows (?) .....	(each) Twenty Thousand Dollars
Narthex Doors (?).....	(each) Fifteen Thousand Dollars
Reconciliation Rooms (2).....	Fifteen Thousand Dollars
Crying Room .....	Fifteen Thousand Dollars
Processional Cross.....	Fifteen Thousand Dollars
Sanctuary Lamp.....	Fifteen Thousand Dollars
Stations of the Cross (14) .....	(each) Fifteen Thousand Dollars
Ambry for Holy oils Bottles.....	Fifteen Thousand Dollars

<sup>1</sup> The quantity of some of these items will be revised once the Architect & Building Committee completes the interior of the new church



# Memorial Gift Opportunities

## SUGGESTED DONATION

### NEW CHURCH <sup>1</sup> (continued)

Holy oils Bottles.....	Fifteen Thousand Dollars
Cantor Lectern.....	Ten Thousand Dollars
Credence Table.....	Ten Thousand Dollars
Deacons' Chair (?).....	(each) Ten Thousand Dollars
offertory Table.....	Ten Thousand Dollars
Adoration Candelabras (2).....	(each) Ten Thousand Dollars
Monstrance and Stand.....	Ten Thousand Dollars
Holy Water Fonts (4).....	(each) Ten Thousand Dollars
Individual Pews (?).....	(each) Ten Thousand Dollars

### LAND SITE DEVELOPMENT AND OUTDOOR MEMORIALS <sup>1</sup>

Main Church Plaza – gathering Area.....	Two Hundred and Fifty Thousand Dollars
general Landscaping (Phase I).....	one Hundred and Fifty Thousand Dollars
Water Feature (Fountain).....	one Hundred Thousand Dollars
Meditation garden Area.....	Seventy Five Thousand Dollars
outdoor Lighting.....	Fifty Thousand Dollars
Parish Signage (Name on Church) (2).....	(each) Fifty Thousand Dollars
New Storage Facility.....	Fifty Thousand Dollars
Drop off Area.....	Twenty Five Thousand Dollars
Parish Signage (Name on Parish entry).....	Twenty Five Thousand Dollars
PA Sound System/equipment.....	Twenty Thousand Dollars
Mechanical Room.....	Twenty Thousand Dollars
Ballards (?).....	(each) Five Thousand Dollars
outdoor Benches (?).....	(each) Three Thousand and Six Hundred Dollars
outdoor Trees (?).....	(each) Two Thousand and Five Hundred Dollars
New Parking Spaces (Phase I) (386).....	(each) Five Hundred Dollars

### CLASSROOMS <sup>1</sup>

Heating Ventilation and Air Conditioning System.....	Fifty Thousand Dollars
Technology Center & equipment.....	Thirty Thousand Dollars
Buildings (Modulars/Permanent) (5).....	(each) Twenty Five Thousand Dollars
Classrooms (8).....	(each) Fifteen Thousand Dollars
Restrooms (2).....	(each) Ten Thousand Dollars
White Boards (?).....	(each) Three Thousand Dollars

### PARISH HALL <sup>1</sup>

Kitchen.....	Seventy Five Thousand Dollars
Heating Ventilation and Air Conditioning System.....	Fifty Thousand Dollars
Buildings (Modulars/Permanent) (?).....	(each) Thirty Five Thousand Dollars

<sup>1</sup> The quantity of some of these items will be revised once the Architect & Building Committee completes the interior of the new church



# Memorial Gift Opportunities

## SUGGESTED DONATION

### PARISH HALL <sup>1</sup> (continued)

Sound System (Speakers & equipment).....	Twenty Thousand Dollars
Kitchen Appliances (?) .....	(each) Ten Thousand Dollars
Screen Wall (Partition) .....	Ten Thousand Dollars
Kitchen equipment/Utensils.....	Five Thousand Dollars
Podium.....	Two Thousand and Five Hundred Dollars

### OFFICE <sup>1</sup>

Administration Building (Name).....	one Hundred and Fifty Thousand Dollars
Small Conference Room .....	Seventy Five Thousand Dollars
Heating Ventilation and Air Conditioning System .....	Fifty Thousand Dollars
Pastor's Office .....	Thirty Five Thousand Dollars
Buildings (Modulars/Permanent) (?).....	(each) Thirty Five Thousand Dollars
Religious education office.....	Twenty Five Thousand Dollars
Parish Business Manager Office .....	Fifteen Thousand Dollars
Small Conference Room Furniture .....	Fifteen Thousand Dollars
office equipment .....	Ten Thousand Dollars
Reception Area .....	Ten Thousand Dollars
other Rooms (?).....	(each) Five Thousand Dollars

### RECTORY <sup>1</sup>

Home.....	Two Hundred and Fifty Thousand Dollars
Kitchen .....	Fifty Thousand Dollars

<sup>1</sup> *The quantity of some of these items will be revised once the Architect & Building Committee completes the interior of the new church*



If you are able to contribute a memorial item, it should be in response to god's gift to you. We realize, not everyone will want to contribute a memorial item or is capable of doing so. These memorials are one way of giving back to God in proportion to what god has given to us.

The memorials listed above do not represent the actual cost of the items. The suggested donation amount for each naming opportunity is relative to the religious and educational value in our church traditions. All donors to the campaign regardless of amount will be listed in a memorial book and on a prominent display located in our new church Phase I project.



*"Everyone must give according to what has been INWARDLY DECIDED; not grudgingly, for God loves a cheerful giver. God can multiply favors among you so that you will always have enough of everything and even a surplus for good works."*

*St. Paul 2 Cor 8:7-8*



# The Facts About Pledging

- **Not Legally Binding:** A good faith promise and a moral commitment, not a legal contract.
- **Changes:** Your pledge can be amended or changed by a note or call to the church office.
- **Confidential:** No one will know the amount of your pledge.
- **Installments:** Your pledge can be paid monthly, quarterly, semi-annually or annually.
- **Tax Deductible:** Pledge payments are tax deductible. Donations of appreciated stock, bonds, real property, and gifts in kind can provide favorable tax savings benefits.
- **Initial Payment:** An initial contribution is suggested. However, your completed pledge card is requested in the sealed envelope even if an initial contribution is not possible at this time.
- **No Average Gift:** *"Equal Sacrifice not Equal Gifts"* is our campaign motto. Each household is asked to pledge according to individual means and circumstances. Please be as generous as possible, over and above regular your offertory donations.
- **Starting Points:** Suggested gift plans are provided in the campaign brochure. Some donors are capable of pledging more. Others will pledge less. All pledges are needed and appreciated.
- **Pledge Forms** are requested at the parish office by Commitment Sunday. Help us by making your pledge.
- **100% Retention:** All campaign donations remain within the parish and are not taxed by the Diocese.



# Suggested Gift Plans (5-Year Schedules)



## Cornerstone Gift Plan

<i>Total Gift</i>	<i>Initial Gift</i>	<i>Annually</i>	<i>Semi-Annually</i>	<i>Quarterly</i>	<i>Monthly</i>
\$500,000	50,000	90,000	45,000	22,500	7,500
250,000	25,000	45,000	22,500	11,250	3,750
100,000	10,000	18,000	9,000	4,500	1,500

## Builders Gift Plan

<i>Total Gift</i>	<i>Initial Gift</i>	<i>Annually</i>	<i>Semi-Annually</i>	<i>Quarterly</i>	<i>Monthly</i>
\$90,000	9,000	16,200	8,100	4,050	1,350
75,000	7,500	13,500	6,750	3,375	1,125
50,000	5,000	9,000	4,500	2,250	750

## Heritage Gift Plan

<i>Total Gift</i>	<i>Initial Gift</i>	<i>Annually</i>	<i>Semi-Annually</i>	<i>Quarterly</i>	<i>Monthly</i>
\$45,000	4,500	8,100	4,050	2,025	675
35,000	3,500	6,300	3,150	1,575	525
25,000	2,500	4,500	2,250	1,125	375

## Legacy Gift Plan

<i>Total Gift</i>	<i>Initial Gift</i>	<i>Annually</i>	<i>Semi-Annually</i>	<i>Quarterly</i>	<i>Monthly</i>
\$20,000	2,000	3,600	1,800	900	300
15,000	1,500	2,700	1,350	675	225
10,000	1,000	1,800	900	450	150

## Stewards Gift Plan

<i>Total Gift</i>	<i>Initial Gift</i>	<i>Annually</i>	<i>Semi-Annually</i>	<i>Quarterly</i>	<i>Monthly</i>
\$9,000	900	1,620	810	405	135
7,500	750	1,350	675	338	113
6,000	600	1,080	540	270	90
5,000	500	900	450	225	75

- All gifts, regardless of the amount, are very much appreciated.
- A 10% initial gift is encouraged but is not necessary.
- Pledges to the "Preserving Our Past...Growing Our Faith...Building Our Future" Campaign are separate from regular weekly offerings which fund ongoing parish expenses.
- All contributions are tax deductible. Contact your tax advisor if you have questions.

**For more information, please contact the Parish Office (559) 686-3847**



# Pledge Form

"Preserving Our Past...  
Growing Our Faith...  
Building Our Future"



☐ New Pledge

☐ Renew Pledge

(Please print)

Name: \_\_\_\_\_ Date: \_\_\_\_\_

Address: \_\_\_\_\_

City: \_\_\_\_\_ State: \_\_\_\_\_ Zip: \_\_\_\_\_

Telephone: \_\_\_\_\_ e-mail: \_\_\_\_\_

*I/We are pleased to provide a pledge/gift as follows:*

**TOTAL Amount of Pledge/Gift . . . . .**\$ \_\_\_\_\_

**Initial Payment.....**\$ \_\_\_\_\_

**Balance of .....**\$ \_\_\_\_\_

*I/We intend to pay the balance as follows:*

**1 Lump Sum Payment.....**\$ \_\_\_\_\_

**5 Annual Payments of.....**\$ \_\_\_\_\_

**10 Semi-Annual Payments of.....**\$ \_\_\_\_\_

**20 Quarterly Payments of .....**\$ \_\_\_\_\_

**60 Monthly Payments of.....**\$ \_\_\_\_\_

Signature: \_\_\_\_\_ Payment Start Date: \_\_\_\_\_

envelope Number (optional): \_\_\_\_\_

☐ I/We are interested in more information about how to include St. Rita's Church in our will, trust, or as a beneficiary of our life insurance policy.

☐ I/We are interested in how to submit our pledge payment(s) using bill pay.

Please make checks payable to: **St. Rita's Building Fund**

Please print Memorial Designation: \_\_\_\_\_

\_\_\_\_\_  
\_\_\_\_\_  
\_\_\_\_\_

This letter of intent is not a legal document. It or any subsequent payments may be amended.  
All gifts are tax-deductible. your pledge/gift will remain confidential.

Please cut and fill it out.



# - Growing Our Faith -

## Ministries, Programs, Organizations & Services

St. Rita's is an active faith community of **2,600** families. Our spiritual and educational facilities have helped thousands of children and adults on the life journey of faith. There are over **1,056** students enrolled in our religious education program.

St. Rita's now sponsors and supports over **40** ministries and programs. We are blessed with enthusiastic leadership and loyal commitment throughout our church and local community.

### Liturgy

Altar Servers  
Altar Society  
Art and environment  
Choir, Adults & Children  
Communion for the Homebound  
Devoción a la Preciosísima Sangre de Cristo  
eucharistic Ministers  
Lectors  
Ministerio Caleb  
Misioneros Servidores de la Palabra  
Perpetual eucharistic Adoration  
Prayer groups  
Sacristans  
Ushers

### Community & Pastoral Services

Alianza de oración por los Sacerdotes  
Adoración Nocturna: Adultos y Niños  
Catholic Daughters  
Christian Joy Prayer Service  
Grupo de oración:  
Renovación Carismática  
Hospitality outreach  
Knights of Columbus  
Matrimonial Ministry/Preparación Matrimonial  
encuentro Matrimonial  
our Lady of Fatima  
Sociedad guadalupana  
Soldados de Cristo  
Dei Verbum: Bible Study group  
Young Believers: Youth Ministry  
Young Adult Youth group

### Formation & Education

Adult Faith Formation/  
Formación en la Fe para Adultos  
Baptismal Program  
First Communion  
Confirmation  
R.C.I.A./R.I.C.A./R.C.I.C.

### Parish Organization

Building Committee  
Finance Council  
Money Counters  
Parish Council  
Strategic Planning Committee  
Volunteers



## Campaign Prayer

Blessed are you, o Loving god, Divine Architect, and Creator of our Human Family. Blessed be your Son, the Risen Jesus and Cornerstone of our Faith. Blessed be the Holy Spirit, our Inspiration and guide who calls us to broaden and increase Your Kingdom.

Unite us in preserving our past! Help us to recognize the many ways you have made yourself present in the history of our parish. We bless and thank you for the generous pastors and faithful parishioners, who committed themselves to build our parish community. For the generations of your love and grace, we give you thanks and praise!

Strengthen us in growing our faith, as your beloved people! May our diversity of cultures, tongues and gifts always be in union with your divine will! May we, your faithful sons and daughters, always be open to your guidance as we work together for your kingdom!

guide us in building our future! Make our hearts generous to share our time, talent and treasure; to humbly surrender ourselves in building our new church.

May the Holy Spirit be present in every step we take, in every gift we give, and in every challenge we encounter. Help us to gratefully participate in your divine plan and remain united, as one community guided by the Father, the Son and the Holy Spirit. Amen!



# ~ Preserving Our Past ~

We look back on the 81-year history of St. Rita's Catholic Church with pride in its foundation, growth, and history. We place our future in the hands of a generous, gracious, and loving God.

Rev. William Stuhlmann, Pastor of St. Aloysius Church recognized the need for a new mission church to meet the needs of parishioners of Southeast Tulare. He facilitated the land purchased for \$300.	<b>1940</b>	
	<b>1945</b>	The original Mission chapel was erected and completed.
Rev. Ramon Guerra became our first resident priest; recognized the need to expand our mission church to seat 300. The mission church was named St. Rita's.	<b>1950</b>	
	<b>1955</b>	St. Rita's Church is completed at a cost of \$34,788.
The original Mission Chapel is converted into a present Parish Hall.	<b>1966</b>	
	<b>1967</b>	St. Rita's elevated to Parish status. Rev. Charles A. Dorn was the first Pastor.
Rev. John Murphy acquired 3 buildings to be used for CCD CLASSROOMS	<b>1972</b>	
	<b>1973</b>	Led by Fr. Antonio Gonzales, the parish debt was retired, a new rectory was built, two new parking lots were completed; new property was purchased for future expansion.
Rev. Tim Cardoza initiated many new improvements: Renovated sanctuary, installed stain glass windows, Expanded church and addend restrooms, added a centralized heating, cooling, and fire alarm system, added a parking lot, on north end of church. extended the church to include a new wing.	<b>1988</b>	
	<b>2005</b>	Rev. Ignacio Villafan Initiated negotiation to purchases a new 7.99 acres parcel of land for a future church, at a cost of \$400,985.
Bishop John T. Steinbock authorized the Purchase of property for a new church.	<b>2009</b>	
	<b>2012</b>	Rev. Ivan Hernandez Melchor became our Pastor
A Building and Strategic Planning Committee is formed. Fr. Ivan began an organizational planning process that will eventually build a new church.	<b>2013</b>	
	<b>2014</b>	Four architects and Campaign Companies were interviewed. Met with Bishop Armando Ochoa and received approval to hire the architect and Campaign Company. Bishop Ochoa approved St. Rita's plan to build a new 1,500 seat capacity church.
Site Work began at the new church property	<b>July 27, 2020</b>	
	<b>April 27, 2021</b>	Church Groundbreaking Ceremony for New Church
New Church construction began	<b>July 26, 2021</b>	
First Church Cornerstone Black Installed	<b>Sept. 18, 2021</b>	

## Projected Church completion date – August or September of 2022.

The true history of St. Rita's parish is much more powerful. The appearance and condition of our grounds, its structures, and surroundings, is a direct reflection of the love, many who give of their time and talents to achieve and maintain the desired levels of beauty and vitality we enjoy today. We encourage all parishioners to become involved with their new community effort to build our new church and help our parish to grow.

**Saint Rita's Catholic Church** 954 South O Street, Tulare, California 93274  
Tel: (559) 686-3847 Fax (559) 686-9672 Website: [www.stritacatholicchurch.com](http://www.stritacatholicchurch.com)  
E-mail: [campaign@stritacatholicchurch.com](mailto:campaign@stritacatholicchurch.com)